



PARKVIEW RESIDENCES,  
MARYLEBONE, NW1  
£11,266 Per Month

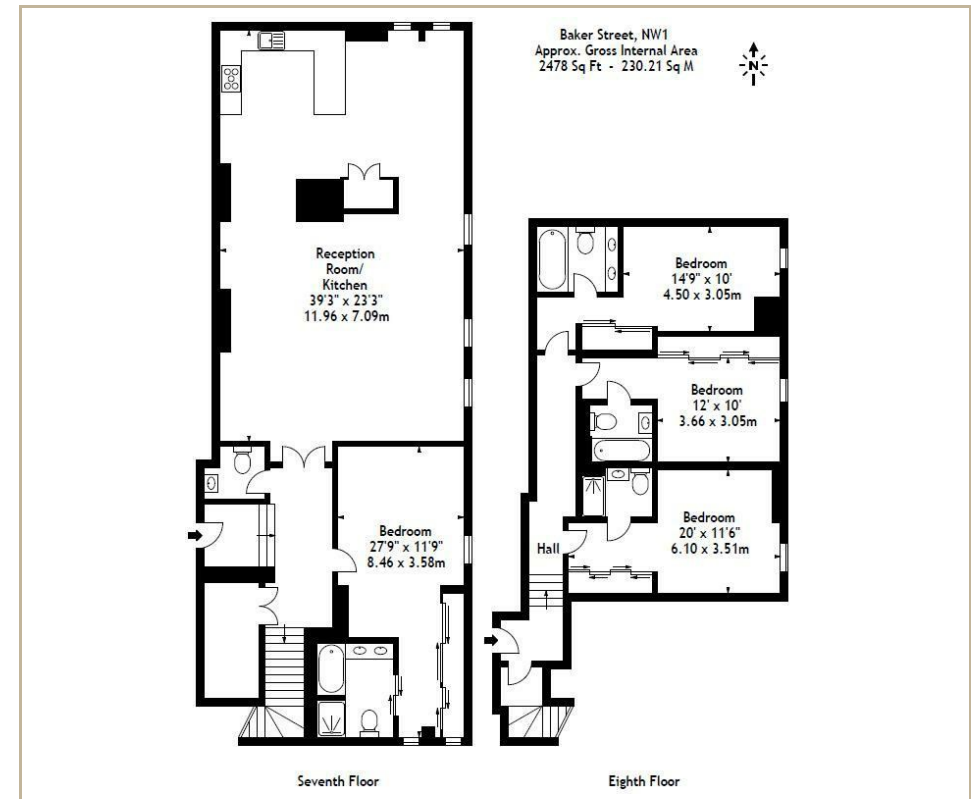
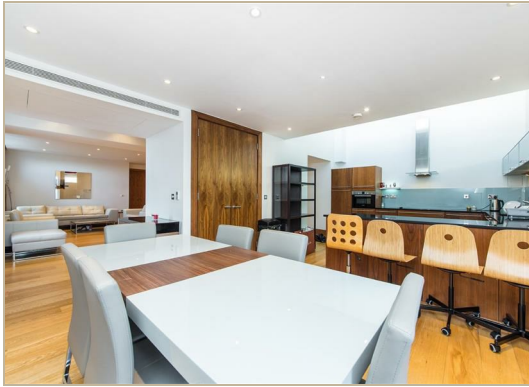
T. +44 (0) 20 7935 0011  
E. [enquire@napierwatt.co.uk](mailto:enquire@napierwatt.co.uk)  
[WWW.NAPIERWATT.CO.UK](http://WWW.NAPIERWATT.CO.UK)

**NAPIER WATT**  
PROPERTY CONSULTANTS

## Description

A modern four bedroom duplex apartment located on the seventh and eighth floor in a very popular purpose built with 24 hour concierge services, the property offer a superb living space in a sought after residential development moments from Regent's Park and wide selection of world class amenities. All apartments comprise

of bespoke fitted kitchens, wood floors and under floor heating throughout, high quality marble/limestone bathrooms and a smart contemporary style finish. All apartments have climate control. Underground parking may be available by separate negotiation.



## TERMS

**For Clarification** we wish to inform prospective purchasers that we have prepared these sales particulars as a general guide. We have not carried out a survey, nor tested the services, appliances and specific fittings. Room sizes are approximate and rounded: they are taken between internal wall surfaces and therefore include cupboards/shelves, etc. Accordingly, they should not be relied upon for carpets and furnishings. Formal notice is given that all fixtures and fittings, carpeting, curtains/blinds and kitchen equipment, whether fitted or not, are deemed to be removable by the vendor unless specifically itemised within these sales particulars.

T. +44 (0) 20 7935 0011  
E. [enquire@napierwatt.co.uk](mailto:enquire@napierwatt.co.uk)  
[WWW.NAPIERWATT.CO.UK](http://WWW.NAPIERWATT.CO.UK)

**NAPIER WATT**  
PROPERTY CONSULTANTS